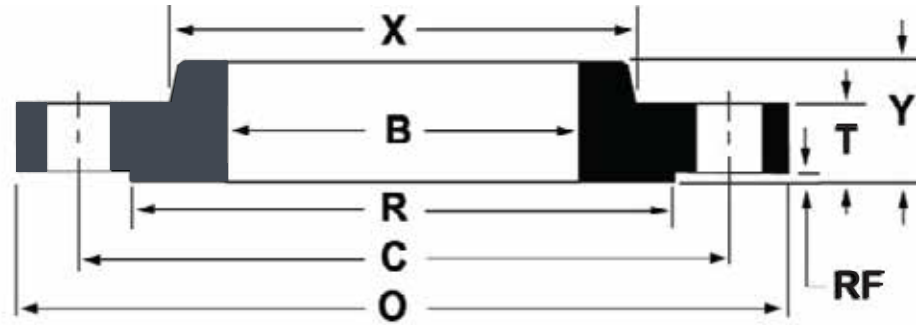


ANSI B16.5 CLASS 150 SOCKET-WELD FLANGES

Nominal Pipe Size	Outside Diameter (O)	Thickness (T)	Raised Face Diameter (R)	Length Thru Hub (Y)	Hub Diameter (X)	Bore (B1)	Bore (B2)	Depth of Socket (D)	Number of Holes	Diameter of Holes	Bolt Circle (C)	Approximate Weight (lbs)
½	3.50	0.44	1.38	0.63	1.19	0.62	0.88	0.38	4	0.63	2.38	1
¾	3.88	0.50	1.69	0.63	1.50	0.82	1.09	0.44	4	0.63	2.75	2
1	4.25	0.56	2.00	0.69	1.94	1.05	1.36	0.50	4	0.63	3.13	2
1¼	4.63	0.63	2.50	0.81	2.31	1.38	1.70	0.56	4	0.63	3.50	3
1½	5.00	0.69	2.88	0.88	2.56	1.61	1.95	0.63	4	0.63	3.88	3
2	6.00	0.75	3.63	1.00	3.06	2.07	2.44	0.69	4	0.75	4.75	5
2½	7.00	0.88	4.13	1.13	3.56	2.47	2.94	0.75	4	0.75	5.50	7
3	7.50	0.94	5.00	1.19	4.25	3.07	3.57	0.81	4	0.75	6.00	8
3½	8.50	0.94	5.50	1.25	4.81	3.55	4.07	0.88	8	0.75	7.00	11
4	9.00	0.94	6.19	1.31	5.31	4.03	4.57	0.94	8	0.75	7.50	13
5	10.00	0.94	7.13	1.44	6.44	5.05	5.66	0.94	8	0.88	8.50	15
6	11.00	1.00	8.50	1.56	7.56	6.07	6.72	1.06	8	0.88	9.50	19
8	13.50	1.13	10.63	1.75	9.69	7.98	8.72	1.25	8	0.88	11.75	30
10	16.00	1.19	12.75	1.94	12.00	10.02	10.88	1.31	12	1.00	14.25	43
12	19.00	1.25	15.00	2.19	14.38	12.00	12.88	1.56	12	1.00	17.00	64
14	21.00	1.38	16.25	2.25	15.75	13.25	14.14	1.63	12	1.13	18.75	90
16	23.50	1.44	18.50	2.50	18.00	15.25	16.16	1.75	16	1.13	21.25	98
18	25.00	1.56	21.00	2.69	19.88	17.25	18.00	1.94	16	1.25	22.75	130
20	27.50	1.69	23.00	2.88	22.00	19.25	20.20	2.13	20	1.25	25.00	165
22	29.50	1.81	25.25	3.13	24.25	21.25	22.22	2.38	20	1.38	27.25	185
24	32.00	1.88	27.25	3.25	26.13	23.25	24.25	2.50	20	1.38	29.50	220

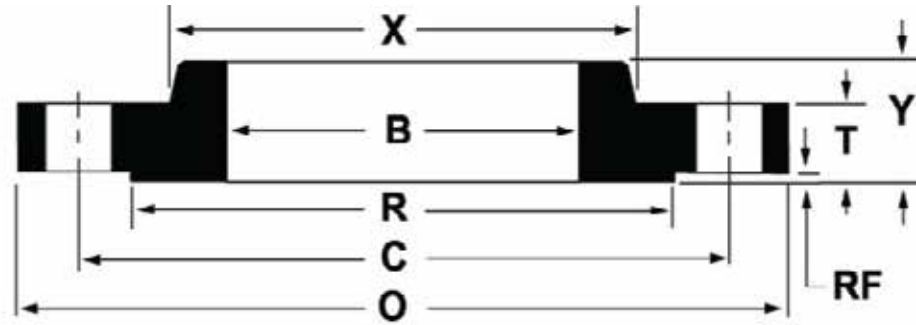
*All dimensions are in inches.
 These flanges will be furnished with a 1/16" raised face unless otherwise specified.
 Flat face option available.
 Standard Bore will be furnished unless otherwise specified.



ANSI B16.5 CLASS 300 SLIP ON FLANGES

Nominal Pipe Size	Outside Diameter (O)	Thickness (T)	Raised Face Diameter (R)	Length Thru Hub (Y)	Hub Diameter (X)	Bore (B)	Number of Holes	Diameter of Holes	Bolt Circle (C)	Approximate Weight (lbs)
½	3.75	0.56	1.38	0.88	1.50	0.88	4	0.63	2.63	2
¾	4.63	0.63	1.69	1.00	1.88	1.09	4	0.75	3.25	3
1	4.88	0.69	2.00	1.06	2.13	1.36	4	0.75	3.50	3
1¼	5.25	0.75	2.50	1.06	2.50	1.70	4	0.75	3.88	4
1½	6.13	0.81	2.88	1.19	2.75	1.95	4	0.88	4.50	6
2	6.50	0.88	3.63	1.31	3.31	2.44	8	0.75	5.00	7
2½	7.50	1.00	4.13	1.50	3.94	2.94	8	0.88	5.88	10
3	8.25	1.13	5.00	1.69	4.63	3.57	8	0.88	6.63	13
3½	9.00	1.19	5.50	1.75	5.25	4.07	8	0.88	7.25	17
4	10.00	1.25	6.19	1.88	5.75	4.57	8	0.88	7.88	22
5	11.00	1.38	7.13	2.00	7.00	5.66	8	0.88	9.25	28
6	12.50	1.44	8.50	2.06	8.13	6.72	12	0.88	10.63	39
8	15.00	1.63	10.63	2.44	10.25	8.72	12	1.00	13.00	58
10	17.50	1.88	12.75	2.62	12.63	10.88	16	1.13	15.25	81
12	20.50	2.00	15.00	2.88	14.75	12.88	16	1.25	17.75	115
14	23.00	2.13	16.25	3.00	16.75	14.14	20	1.25	20.25	165
16	25.50	2.25	18.50	3.25	19.00	16.16	20	1.38	22.50	190
18	28.00	2.38	21.00	3.50	21.00	18.18	24	1.38	24.75	250
20	30.50	2.50	23.00	3.75	23.13	20.20	24	1.38	27.00	315
22	33.00	2.63	25.25	4.00	25.25	2.22	24	1.63	29.25	370
24	36.00	2.75	27.25	4.19	27.63	24.25	24	1.63	32.00	475

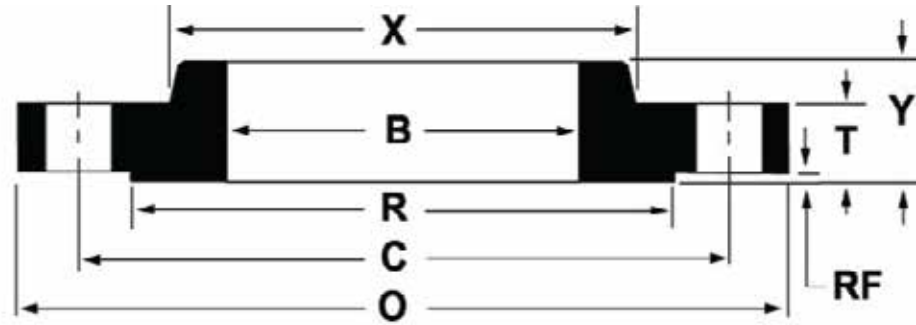
*All dimensions are in inches.
 These flanges will be furnished with a 1/16" raised face unless otherwise specified.
 Flat face option available.



ANSI B16.5 CLASS 600 SLIP ON FLANGES

Nominal Pipe Size	Outside Diameter (O)	Thickness (T)	Raised Face Diameter (R)	Lenght Thru Hub (Y)	Hub Diameter (X)	Bore (B1)	Bore (B2)	Depth of Socket (D)	Number of Holes	Diameter of Holes	Bolt Circle (C)	Approximate Weight (lbs)
½	3.75	0.56	1.38	0.88	1.50	Specified by purchaser	0.88	0.38	4	0.63	2.63	2
¾	4.63	0.63	1.69	1.00	1.88	Specified by purchaser	1.06	0.44	4	0.75	3.25	3
1	4.88	0.69	2.00	1.06	2.13	Specified by purchaser	1.36	0.50	4	0.75	3.50	4
1¼	5.25	0.81	2.50	1.13	2.50	Specified by purchaser	1.70	0.56	4	0.75	3.88	5
1½	6.13	0.88	2.88	1.25	2.75	Specified by purchaser	1.95	0.63	4	0.88	4.50	7
2	6.50	1.00	3.63	1.44	3.31	Specified by purchaser	2.44	0.69	8	0.75	5.00	9
2½	7.50	1.13	4.13	1.63	3.94	Specified by purchaser	2.94	0.75	8	0.88	5.88	13
3	8.25	1.25	5.00	1.81	4.63	Specified by purchaser	3.57	0.81	8	0.88	6.63	16

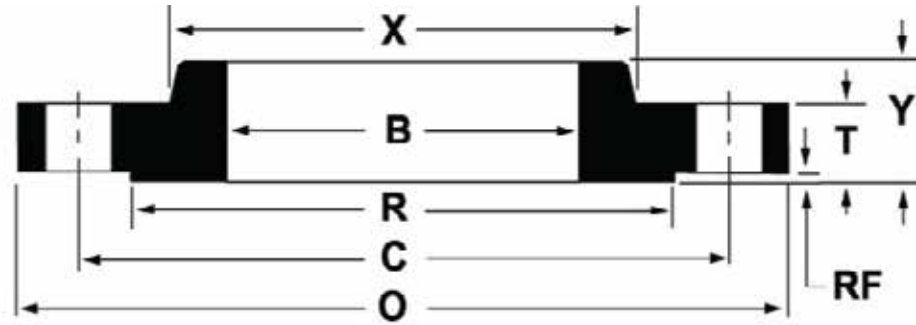
*All dimensions are in inches.
 These flanges will be furnished with a 1/4" raised face unless otherwise specified.
 Flat face option available.



ANSI B16.5 CLASS 900 SLIP ON FLANGES

Nominal Pipe Size	Outside Diameter (O)	Thickness (T)	Raised Face Diameter (R)	Length Thru Hub (Y)	Hub Diameter (X)	Bore (B)	Number of Holes	Diameter of Holes	Bolt Circle (C)	Approximate Weight (lbs)
½	4.75	0.88	1.38	1.25	1.50	0.88	4	0.88	3.25	4
¾	5.13	1.00	1.69	1.38	1.75	1.09	4	0.88	3.50	5
1	5.88	1.13	2.00	1.63	2.06	1.36	4	1.00	4.00	8
1¼	6.25	1.13	2.50	1.63	2.50	1.70	4	1.00	4.38	9
1½	7.00	1.25	2.88	1.75	2.75	1.95	4	1.13	4.88	12
2	8.50	1.50	3.63	2.25	4.13	2.44	8	1.00	6.50	25
2½	9.63	1.63	4.13	2.50	4.88	2.94	8	1.13	7.50	36
3	9.50	1.50	5.00	2.13	5.00	3.57	8	1.00	7.50	26
4	11.50	1.75	6.19	2.75	6.25	4.57	8	1.25	9.25	53
5	13.75	2.00	7.13	3.13	7.50	5.66	8	1.38	11.00	83
6	15.00	2.19	8.50	3.38	9.25	6.72	12	1.25	12.50	110
8	18.50	2.50	10.63	4.00	11.75	8.72	12	1.50	15.50	170
10	21.50	2.75	12.75	4.25	14.50	10.88	16	1.50	18.50	245
12	24.00	3.13	15.00	4.63	16.50	12.88	20	1.50	21.00	325
14	25.25	3.38	16.25	5.13	17.75	14.14	20	1.63	22.00	400
16	27.75	3.50	18.50	5.25	20.00	16.16	20	1.75	24.25	425
18	31.00	4.00	21.00	6.00	22.25	18.18	20	2.00	27.00	600
20	33.75	4.25	23.00	6.25	24.50	20.20	20	2.13	29.50	730
24	41.00	5.50	27.25	8.00	29.50	24.25	20	2.63	35.50	1400

*All dimensions are in inches.
 These flanges will be furnished with a 1/4" raised face unless otherwise specified.
 Flat face option available.



ANSI B16.5 CLASS 1500 SLIP ON FLANGES

Nominal Pipe Size	Outside Diameter (O)	Thickness (T)	Raised Face Diameter (R)	Length Thru Hub (Y)	Hub Diameter (X)	Bore (B)	Number of Holes	Diameter of Holes	Bolt Circle (C)	Approximate Weight (lbs)
½	4.75	0.88	1.38	1.25	1.50	0.88	4	0.88	3.25	4
¾	5.13	1.00	1.69	1.38	1.75	1.09	4	0.88	3.50	5
1	5.88	1.13	2.00	1.63	2.06	1.36	4	1.00	4.00	8
1¼	6.25	1.13	2.50	1.63	2.50	1.70	4	1.00	4.38	9
1½	7.00	1.25	2.88	1.75	2.75	1.95	4	1.13	4.88	12
2	8.50	1.50	3.63	2.25	4.13	2.44	8	1.00	6.50	25
2½	9.63	1.63	4.13	2.50	4.88	2.94	8	1.13	7.50	36
3	10.50	1.88	5.00	2.88	5.25	3.57	8	1.25	8.00	48
4	12.25	2.13	6.19	3.56	6.38	4.57	8	1.38	9.50	73
5	14.75	2.88	7.13	4.13	7.75	5.66	8	1.63	11.50	130
6	15.50	3.25	8.50	4.69	9.00	6.72	12	1.50	12.50	165
8	19.00	3.63	10.63	5.63	11.50	8.72	12	1.75	15.50	260
10	23.00	4.25	12.75	6.25	14.50	10.88	12	2.00	19.00	435
12	26.50	4.88	15.00	7.13	17.75	12.88	16	2.13	22.50	580

*All dimensions are in inches.
 These flanges will be furnished with a 1/4" raised face unless otherwise specified.
 Flat face option available.