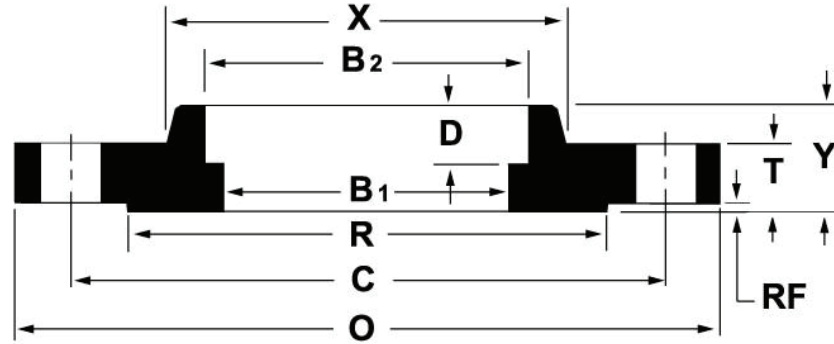


ANSI B16.5 CLASS 150 SOCKET-WELD FLANGES

Nominal Pipe Size	Outside Diameter (O)	Thickness (T)	Raised Face Diameter (R)	Length Thru Hub (Y)	Hub Diameter (X)	Bore (B1)	Bore (B2)	Depth of Socket (D)	Number of Holes	Diameter of Holes	Bolt Circle (C)	Approximate Weight (lbs)
½	3.50	0.44	1.38	0.63	1.19	0.62	0.88	0.38	4	0.63	2.38	1
¾	3.88	0.50	1.69	0.63	1.50	0.82	1.09	0.44	4	0.63	2.75	2
1	4.25	0.56	2.00	0.69	1.94	1.05	1.36	0.50	4	0.63	3.13	2
1¼	4.63	0.63	2.50	0.81	2.31	1.38	1.70	0.56	4	0.63	3.50	3
1½	5.00	0.69	2.88	0.88	2.56	1.61	1.95	0.63	4	0.63	3.88	3
2	6.00	0.75	3.63	1.00	3.06	2.07	2.44	0.69	4	0.75	4.75	5
2½	7.00	0.88	4.13	1.13	3.56	2.47	2.94	0.75	4	0.75	5.50	7
3	7.50	0.94	5.00	1.19	4.25	3.07	3.57	0.81	4	0.75	6.00	8
3½	8.50	0.94	5.50	1.25	4.81	3.55	4.07	0.88	8	0.75	7.00	11
4	9.00	0.94	6.19	1.31	5.31	4.03	4.57	0.94	8	0.75	7.50	13
5	10.00	0.94	7.13	1.44	6.44	5.05	5.66	0.94	8	0.88	8.50	15
6	11.00	1.00	8.50	1.56	7.56	6.07	6.72	1.06	8	0.88	9.50	19
8	13.50	1.13	10.63	1.75	9.69	7.98	8.72	1.25	8	0.88	11.75	30
10	16.00	1.19	12.75	1.94	12.00	10.02	10.88	1.31	12	1.00	14.25	43
12	19.00	1.25	15.00	2.19	14.38	12.00	12.88	1.56	12	1.00	17.00	64
14	21.00	1.38	16.25	2.25	15.75	13.25	14.14	1.63	12	1.13	18.75	90
16	23.50	1.44	18.50	2.50	18.00	15.25	16.16	1.75	16	1.13	21.25	98
18	25.00	1.56	21.00	2.69	19.88	17.25	18.18	1.94	16	1.25	22.75	130
20	27.50	1.69	23.00	2.88	22.00	19.25	20.20	2.13	20	1.25	25.00	165
22	29.50	1.81	25.25	3.13	24.25	21.25	22.22	2.38	20	1.38	27.25	185
24	32.00	1.88	27.25	3.25	26.13	23.25	24.25	2.50	20	1.38	29.50	220

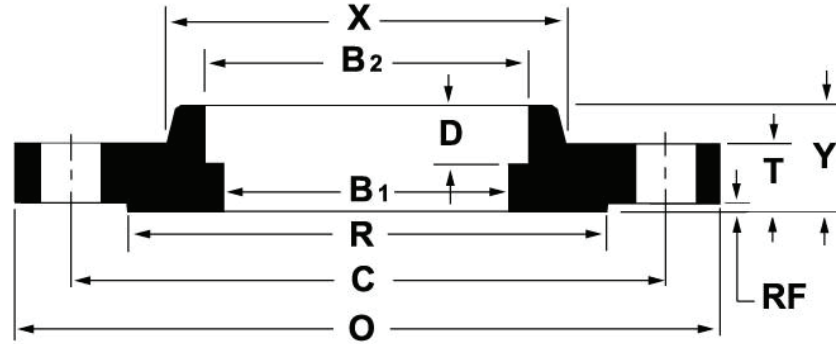
*All dimensions are in inches.
 These flanges will be furnished with a 1/16" raised face unless otherwise specified.
 Flat face option available.
 Standard Bore will be furnished unless otherwise specified.



ANSI B16.5 CLASS 300 SOCKET-WELD FLANGES

Nominal Pipe Size	Outside Diameter (O)	Thickness (T)	Length Thru Hub (Y)	Hub Diameter (X)	Bore (B1)	Bore (B2)	Depth of Socket (D)	Number of Holes	Diameter of Holes	Bolt Circle (C)	Approximate Weight (lbs)
½	3.75	0.56	0.88	1.50	0.55	0.88	0.38	4	0.63	2.63	2
¾	4.63	0.63	1.00	1.88	0.74	1.09	0.44	4	0.75	3.25	3
1	4.88	0.69	1.06	2.13	0.96	1.36	0.50	4	0.75	3.50	3
1¼	5.25	0.75	1.06	2.50	1.28	1.70	0.56	4	0.75	3.88	4
1½	6.13	0.81	1.19	2.75	1.50	1.95	0.63	4	0.88	4.50	6
2	6.50	0.88	1.31	3.31	1.94	2.44	0.69	8	0.75	5.00	7
2½	7.50	1.00	1.50	3.94	2.32	2.94	0.75	8	0.88	5.88	10
3	8.25	1.13	1.69	4.63	2.90	3.57	0.81	8	0.88	6.63	13
4	10.00	1.19	1.82	5.75	3.83	4.57	0.94	8	0.88	7.88	17

*All dimensions are in inches.
 These flanges will be furnished with a 1/16" raised face unless otherwise specified.
 Flat face option available.
 Extra strong bore will be furnished unless otherwise specified.



ANSI B16.5 CLASS 600 SOCKET-WELD FLANGES

Nominal Pipe Size	Outside Diameter (O)	Thickness (T)	Raised Face Diameter (R)	Length Thru Hub (Y)	Hub Diameter (X)	Bore (B1)	Bore (B2)	Depth of Socket (D)	Number of Holes	Diameter of Holes	Bolt Circle (C)	Approximate Weight (lbs)
½	3.75	0.56	1.38	0.88	1.50	Specified by purchaser	0.88	0.38	4	0.63	2.63	2
¾	4.63	0.63	1.69	1.00	1.88	Specified by purchaser	1.06	0.44	4	0.75	3.25	3
1	4.88	0.69	2.00	1.06	2.13	Specified by purchaser	1.36	0.50	4	0.75	3.50	4
1¼	5.25	0.81	2.50	1.13	2.50	Specified by purchaser	1.70	0.56	4	0.75	3.88	5
1½	6.13	0.88	2.88	1.25	2.75	Specified by purchaser	1.95	0.63	4	0.88	4.50	7
2	6.50	1.00	3.63	1.44	3.31	Specified by purchaser	2.44	0.69	8	0.75	5.00	9
2½	7.50	1.13	4.13	1.63	3.94	Specified by purchaser	2.94	0.75	8	0.88	5.88	13
3	8.25	1.25	5.00	1.81	4.63	Specified by purchaser	3.57	0.81	8	0.88	6.63	16

*All dimensions are in inches.
 These flanges will be furnished with a 1/4" raised face unless otherwise specified.
 Flat face option available.