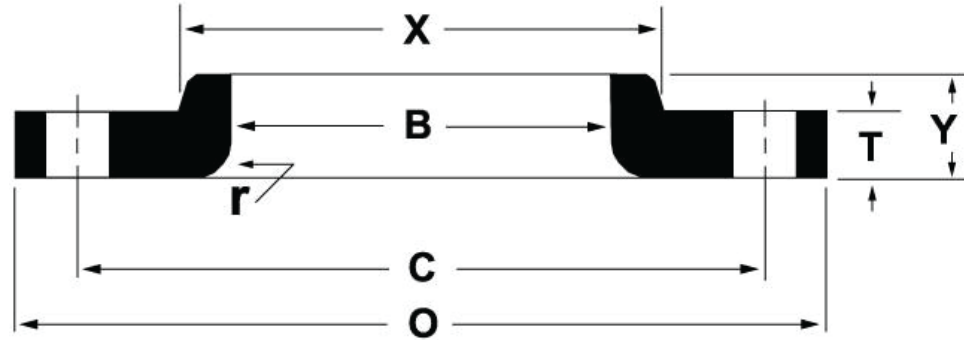


**ANSI B16.5 CLASS 150 LAP JOINT FLANGES**

Nominal Pipe Size	Outside Diameter (O)	Thickness (T)	Lenght Thru Hub (Y)	Hub Diameter (X)	Radius (R)	Number of Holes	Diameter of Holes	Bolt Circle (C)	Approximate Weight (lbs)
½	3.50	0.44	0.63	1.19	0.13	4	0.63	2.38	1
¾	3.88	0.50	0.63	1.50	0.13	4	0.63	2.75	2
1	4.25	0.56	0.69	1.94	0.13	4	0.63	3.13	2
1¼	4.63	0.63	0.81	2.31	0.19	4	0.63	3.50	3
1½	5.00	0.69	0.88	2.56	0.25	4	0.63	3.88	3
2	6.00	0.75	1.00	3.06	0.31	4	0.75	4.75	5
2½	7.00	0.88	1.13	3.56	0.31	4	0.75	5.50	7
3	7.50	0.94	1.19	4.25	0.38	4	0.75	6.00	8
3½	8.50	0.94	1.25	4.81	0.38	8	0.75	7.00	11
4	9.00	0.94	1.31	5.31	0.44	8	0.75	7.50	13
5	10.00	0.94	1.44	6.44	0.44	8	0.88	8.50	15
6	11.00	1.00	1.56	7.56	0.50	8	0.88	9.50	19
8	13.50	1.13	1.75	9.69	0.50	8	0.88	11.75	30
10	16.00	1.19	1.94	12.00	0.50	12	1.00	14.25	43
12	19.00	1.25	2.19	14.38	0.50	12	1.00	17.00	64
14	21.00	1.38	2.25	15.75	0.50	12	1.13	18.75	105
16	23.50	1.44	2.50	18.00	0.50	16	1.13	21.25	140
18	25.00	1.56	2.69	19.88	0.50	16	1.25	22.75	160
20	27.50	1.69	2.88	22.00	0.50	20	1.25	25.00	195
22	29.50	1.81	3.13	24.25	0.50	20	1.38	27.25	245
24	32.00	1.88	3.25	26.13	0.50	20	1.38	29.50	275

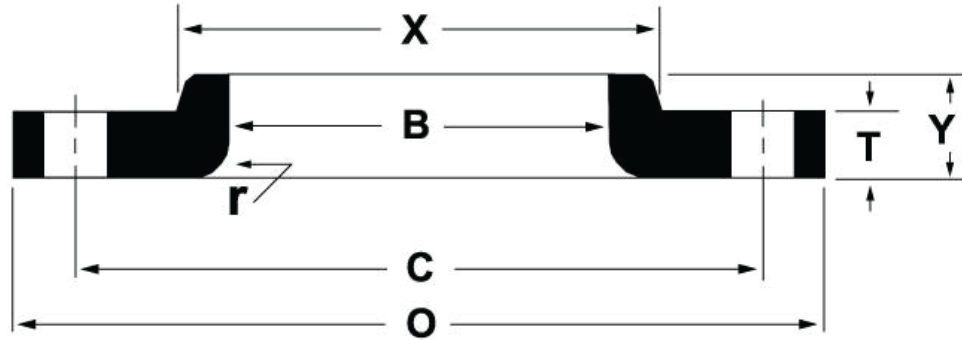
\*All dimensions are in inches.



**ANSI B16.5 CLASS 300 LAP JOINT FLANGES**

Nominal Pipe Size	Outside Diameter (O)	Thickness (T)	Length Thru Hub (Y)	Hub Diameter (X)	Radius (R)	Number of Holes	Diameter of Holes	Bolt Circle (C)	Approximate Weight (lbs)
½	3.75	0.56	0.88	1.50	0.13	4	0.63	2.63	2
¾	4.63	0.63	1.00	1.88	0.13	4	0.75	3.25	3
1	4.88	0.69	1.06	2.13	0.13	4	0.75	3.50	3
1¼	5.25	0.75	1.06	2.50	0.19	4	0.75	3.88	4
1½	6.13	0.81	1.19	2.75	0.25	4	0.88	4.50	6
2	6.50	0.88	1.31	3.31	0.31	8	0.75	5.00	7
2½	7.50	1.00	1.50	3.94	0.31	8	0.88	5.88	10
3	8.25	1.13	1.69	4.63	0.38	8	0.88	6.63	13
3½	9.00	1.19	1.75	5.25	0.38	8	0.88	7.25	17
4	10.00	1.25	1.88	5.75	0.44	8	0.88	7.88	22
5	11.00	1.38	2.00	7.00	0.44	8	0.88	9.25	28
6	12.50	1.44	2.06	8.13	0.50	12	0.88	10.63	39
8	15.00	1.63	2.44	10.25	0.50	12	1.00	13.00	58
10	17.50	1.88	2.62	12.63	0.50	16	1.13	15.25	91
12	20.50	2.00	2.88	14.75	0.50	16	1.25	17.75	140
14	23.00	2.13	3.00	16.75	0.50	20	1.25	20.25	190
16	25.50	2.25	3.25	19.00	0.50	20	1.38	22.50	250
18	28.00	2.38	3.50	21.00	0.50	24	1.38	24.75	295
20	30.50	2.50	3.75	23.13	0.50	24	1.38	27.00	370
22	33.00	2.63	4.00	25.25	0.50	24	1.63	29.25	435
24	36.00	2.75	4.19	27.63	0.50	24	1.63	32.00	550

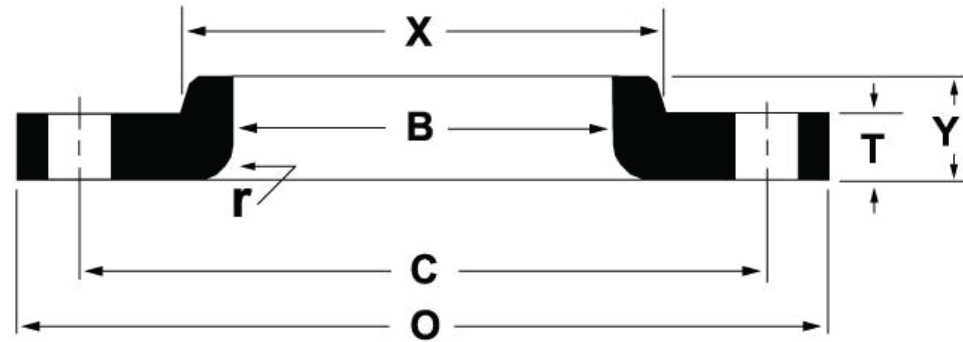
\*All dimensions are in inches.



**ANSI B16.5 CLASS 600 LAP JOINT FLANGES**

Nominal Pipe Size	Outside Diameter (O)	Thickness (T)	Raised Face Diameter (R)	Length Thru Hub (Y)	Hub Diameter (X)	Radius (R)	Bore (B)	Number of Holes	Diameter of Holes	Bolt Circle (C)	Approximate Weight (lbs)
½	3.75	0.56	1.38	0.88	1.50	0.13	0.90	4	0.63	2.63	2
¾	4.63	0.63	1.69	1.00	1.88	0.13	1.11	4	0.75	3.25	3
1	4.88	0.69	2.00	1.06	2.13	0.13	1.38	4	0.75	3.50	4
1¼	5.25	0.81	2.50	1.13	2.50	0.19	1.72	4	0.75	3.88	5
1½	6.13	0.88	2.88	1.25	2.75	0.25	1.97	4	0.88	4.50	7
2	6.50	1.00	3.63	1.44	3.31	0.31	2.46	8	0.75	5.00	9
2½	7.50	1.13	4.13	1.63	3.94	0.31	2.97	8	0.88	5.88	13
3	8.25	1.25	5.00	1.81	4.63	0.38	3.60	8	0.88	6.63	16
3½	9.00	1.38	5.50	1.94	5.25	0.38	4.10	8	1.00	7.25	21
4	10.75	1.50	6.19	2.13	6.00	0.44	4.60	8	1.00	8.50	37
5	13.00	1.75	7.13	2.38	7.44	0.50	5.69	8	1.13	10.50	63
6	14.00	1.88	8.50	2.63	8.75	0.50	6.75	12	1.13	11.50	80
8	16.50	2.19	10.63	3.00	10.75	0.50	8.75	12	1.25	13.75	115
10	20.00	2.50	12.75	3.38	13.50	0.50	10.92	16	1.38	17.00	170
12	22.00	2.63	15.00	3.63	15.75	0.50	12.92	20	1.38	19.25	200
14	23.75	2.75	16.25	3.69	17.00	0.50	14.18	20	1.50	20.75	230
16	27.00	3.00	18.50	4.19	19.50	0.50	16.19	20	1.63	23.75	330
18	29.25	3.25	21.00	4.63	21.50	0.50	18.20	20	1.75	25.75	400
20	32.00	3.50	23.00	5.00	24.00	0.50	20.25	24	1.75	28.50	510
22	34.25	3.75	25.25	5.25	26.25	0.50	22.25	24	1.88	30.63	590
24	37.00	4.00	27.25	5.50	28.25	0.50	24.25	24	2.00	33.00	730

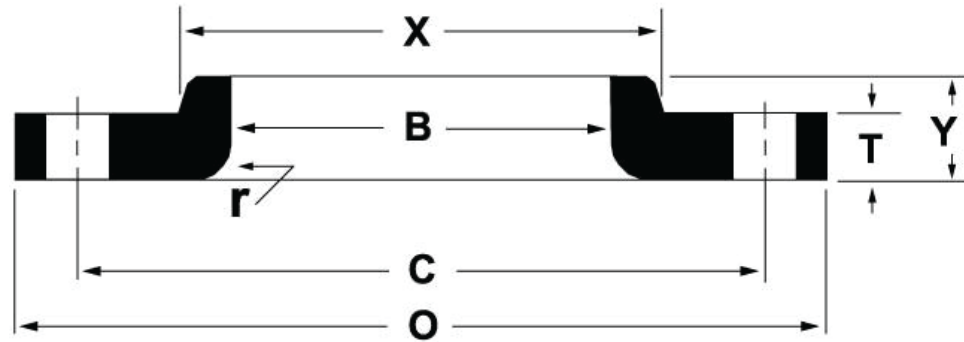
\*All dimensions are in inches.



**ANSI B16.5 CLASS 900 LAP JOINT FLANGES**

Nominal Pipe Size	Outside Diameter (O)	Thickness (T)	Length Thru Hub (Y)	Hub Diameter (X)	Bore (B)	Radius (R)	Number of Holes	Diameter of Holes	Bolt Circle (C)	Approximate Weight (lbs)
½	4.75	0.88	1.38	1.25	1.50	0.13	4	0.88	3.25	4
¾	5.13	1.00	1.69	1.38	1.75	0.13	4	0.88	3.50	5
1	5.88	1.13	2.00	1.63	2.06	0.13	4	1.00	4.00	8
1¼	6.25	1.13	2.50	1.63	2.50	0.19	4	1.00	4.38	9
1½	7.00	1.25	2.88	1.75	2.75	0.25	4	1.13	4.88	12
2	8.50	1.50	3.63	2.25	4.13	0.31	8	1.00	6.50	25
2½	9.63	1.63	4.13	2.50	4.88	0.31	8	1.13	7.50	36
3	9.50	1.50	3.60	5.00	3.60	0.38	8	1.00	7.50	25
4	11.50	1.75	4.60	6.25	4.60	0.44	8	1.25	9.25	51
5	13.75	2.00	5.69	7.50	5.69	0.50	8	1.38	11.00	81
6	15.00	2.19	6.75	9.25	6.75	0.50	12	1.25	12.50	105
8	18.50	2.50	8.75	11.75	8.75	0.50	12	1.50	15.50	190
10	21.50	2.75	10.92	14.50	10.92	0.50	16	1.50	18.50	275
12	24.00	3.13	12.92	16.50	12.92	0.50	20	1.50	21.00	370
14	25.25	3.38	14.18	17.75	14.18	0.50	20	1.63	22.00	415
16	27.75	3.50	16.19	20.00	16.19	0.50	20	1.75	24.25	465
18	31.00	4.00	18.20	22.25	18.20	0.50	20	2.00	27.00	650
20	33.75	4.25	20.25	24.50	20.25	0.50	20	2.13	29.50	810
24	41.00	5.50	24.25	29.50	24.25	0.50	20	2.63	35.50	1550

\*All dimensions are in inches.



ANSI B16.5 CLASS 1500 LAP JOINT FLANGES

Nominal Pipe Size	Outside Diameter (O)	Thickness (T)	Raised Face Diameter (R)	Length Thru Hub (Y)	Hub Diameter (X)	Number of Holes	Diameter of Holes	Bolt Circle (C)	Approximate Weight (lbs)
½	4.75	0.88	1.38	1.25	1.50	4	0.88	3.25	4
¾	5.13	1.00	1.69	1.38	1.75	4	0.88	3.50	5
1	5.88	1.13	2.00	1.63	2.06	4	1.00	4.00	8
1¼	6.25	1.13	2.50	1.63	2.50	4	1.00	4.38	9
1½	7.00	1.25	2.88	1.75	2.75	4	1.13	4.88	12
2	8.50	1.50	3.63	2.25	4.13	8	1.00	6.50	25
2½	9.63	1.63	4.13	2.50	4.88	8	1.13	7.50	36
3	10.50	1.88	5.00	2.88	5.25	8	1.25	8.00	48
4	12.25	2.13	6.19	3.56	6.38	8	1.38	9.50	73
5	14.75	2.88	7.31	4.13	7.75	8	1.63	11.50	130
6	15.50	3.25	8.50	4.69	9.00	12	1.50	12.50	165
8	19.00	3.63	10.63	5.63	11.50	12	1.75	15.50	260
10	23.00	4.25	12.75	6.25	14.50	12	2.00	19.00	435
12	26.50	4.88	15.00	7.13	17.75	16	2.13	22.50	580

\*All dimensions are in inches.